

# LETS GET POPPING

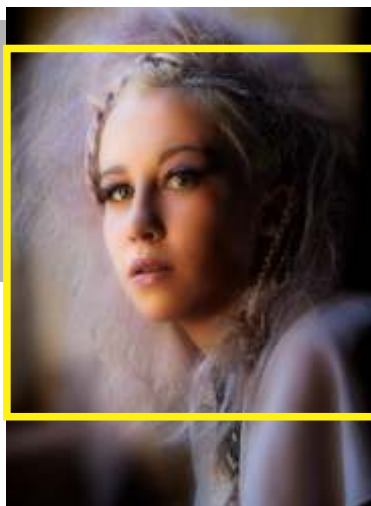
step ①

Choose photo to work with , loop light- and Rembrandt portrait works best for me.

- I prefer a square crop for my portrait for no real reason but if Andy did it why should I not?
- 200 dpi on size you wish is ample- should you wish to go big big (which I did) 150dpi at 1000mm x 1000mm gave me a close on 100 meg file which is still good to work with.

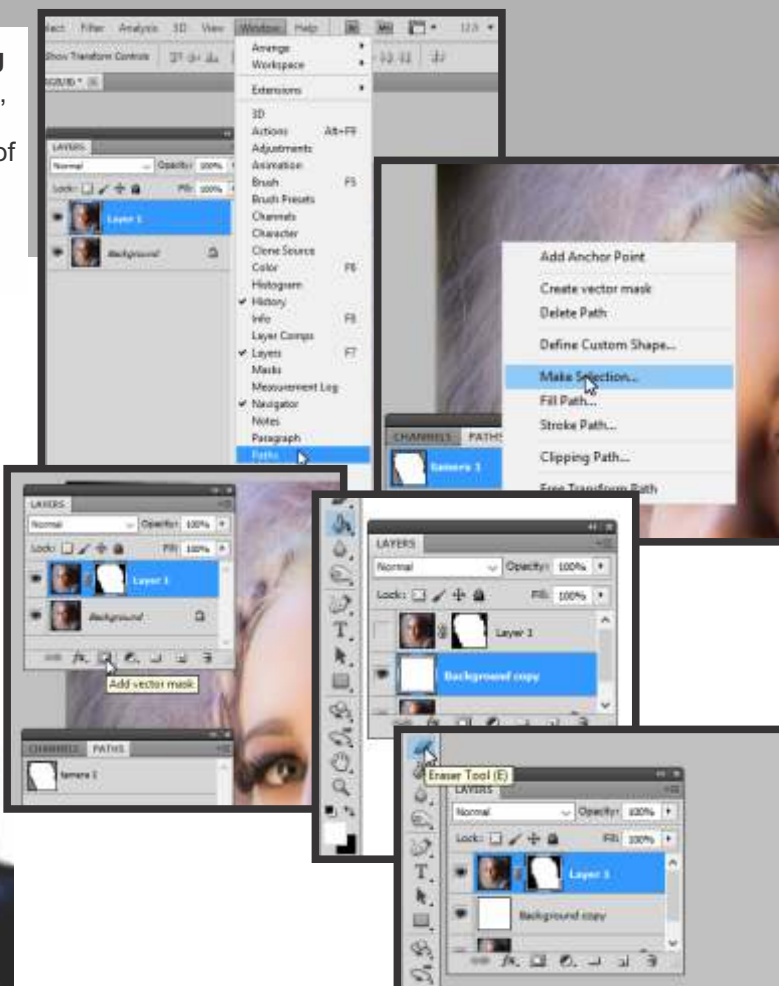
Remember, good photos give good results.

Photo by Hein Waschefort of Tamera van denHoeck at VSS Boshabelo workshop 2016



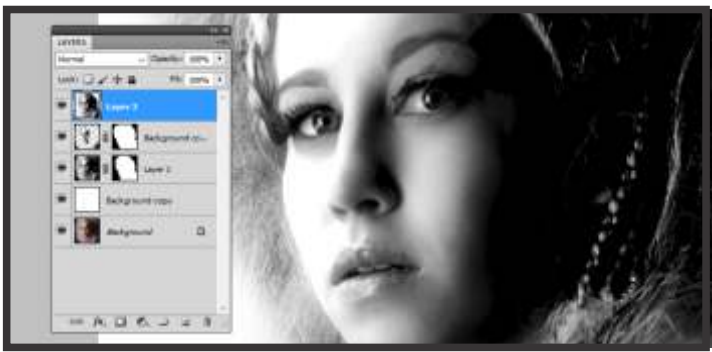
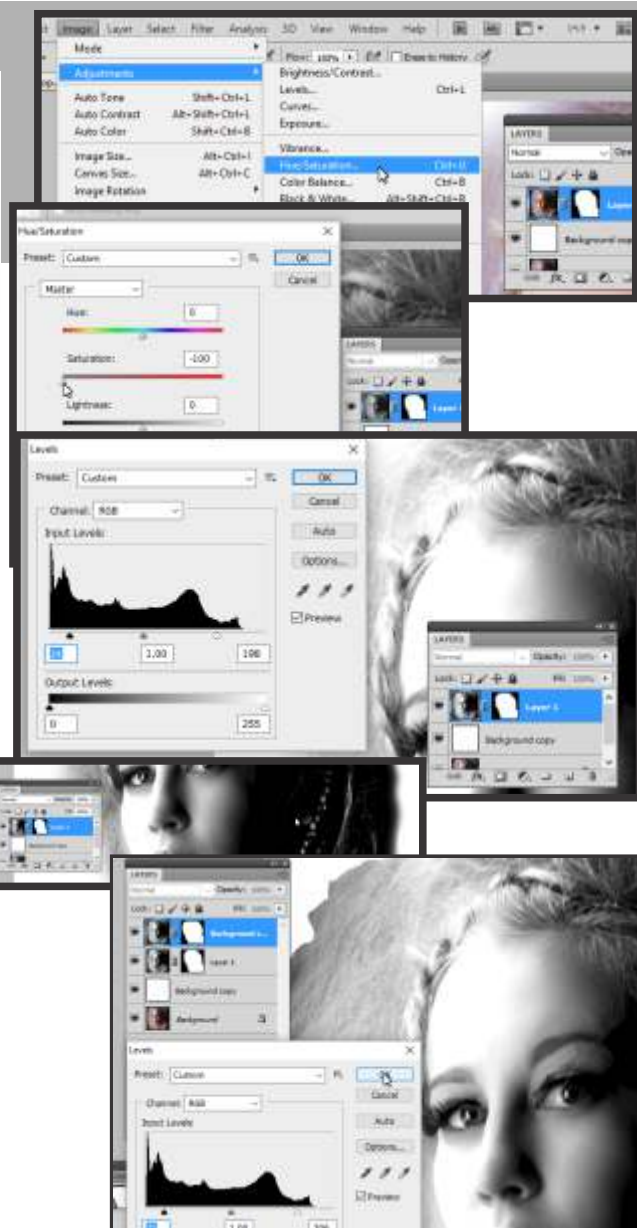
step ②

- duplicate background **ctrl+J**
- select **Paths** under **Window**, trace Tamera's outline with **Free Form Pen Tool** or tool of choice, name path Tamera 1
- right click on path and select **Make selection > OK**
- click **Add vector mask**
- select **Background** layer, duplicate background **ctrl+J**
- optional, to soften hair, click on mask in layer 1 (corners must be black), choose **Eraser Tool** 100% Opacity & 100% Flow and soften hairline, with normal straight hair this step is not recommended



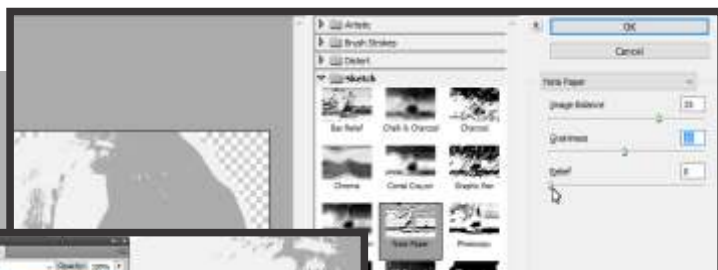
### step 3

- choose **Image > Adjustments > Hue/Saturation...**
- in **Hue/Saturation** box slide **Saturation** to **-100** > **OK**
- choose **Image > Adjustments > Levels...** slide sliders for hair detail, in my case 24 - 1.00 - 189, ignore face value.
- Optional: the **Burn** and **Dodge** tool can be used to further increase contrast in hair
- select **Background** layer, duplicate background **ctrl+J** move this layer to top by holding mouse button
- Select **Path Tamera 1** window
- (3g. & 3h. are similar to 2c. & 2d.)right click on path with pen tool and select **Make selection > OK**
- click **Add vector mask**
- adjust face contrast using **Levels** (3c.), I used 25 - 1.00 - 206
- with **Eraser** tool carefully erase hair areas for background hair contrast to become visible
- Select **Path Tamera 1** window (3f.) right click on path with pen tool and select **Make selection > OK** (3g. & 3h.)
- go to **Edit > Copy Merged** then **Edit > Paste**, you now have a merged layer of correct hair and face contrast



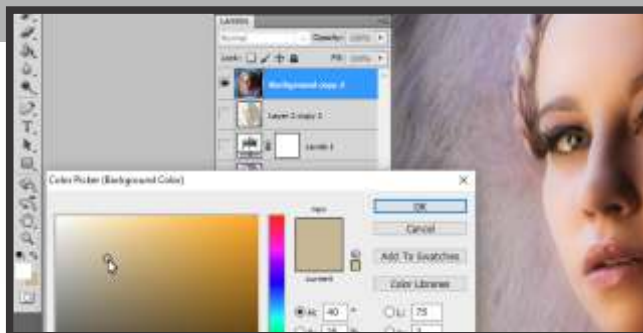
## step 4

- a. with top layer selected go to **Filters > Artistic > Note Paper**, slide to contrast of your liking- I chose 35 - 10 -0 respectively, **OK**
- b. in **LAYERS** box click **Adjustment Layers** at bottom and choose **Levels...** slide the black slider to 165
- c. Create new layer from layer 2 (ctrl+J)
- d. Draw hair area with pen, double click in **Paths** box on **Work Path** and change to hair
- e. double click on **Set Foreground Colour** (at bottom of toolbox on left) and choose colour of choice, I chose purple
- f. right click with pen on path choose **Fill Path**, in box choose **Multiply > OK**
- g. repeat previous steps adding more colour, remember to deselect all paths when you wish to create a new path on a new layer



## step 5

- a. select **Background** layer, duplicate background **ctrl+J** move this layer to top by holding mouse button
  - b. Make foreground colour white and choose a vintage colour for background
  - c. go to **Filter Gallery > Sketch > Graphic Pen** and choose, I chose respectively 15 and 72 but this will depend on your image size > **OK**
  - d. in the top drop-down menu in layers choose **Darken, Multiply** or your choice
  - e. Save your work as a pdf and layered re-open
  - f. **choose layers and:**
    - change their **Colour Hues**
    - dodge areas with **Eraser** tool
    - hide layers
    - fill selectively
  - g. with each satisfactory image flatten the layers, save as a panel and re-open your pdf file
  - h. create the number of panels you wish to have and mix them for a satisfactory composition.
- This is a work of art and needs to be displayed**



**AS BIG AS POSSIBLE**



Print your panels, find a big wall, hang them



*Elbie Lindeque at her house, photo and artwork; Hein Waschefort*